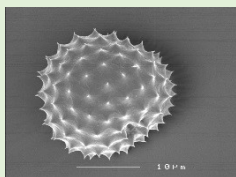


### Ragweed

One of the main causes of pollen allergy and pollen-induced asthma during the late summer in North America and Central Europe is ragweed. In Europe short or common ragweed (*A. artemisiifolia* L.) is the prevalent species of the genus.

Ragweed pollen may cause allergy symptoms also in areas where the plant is not widespread.

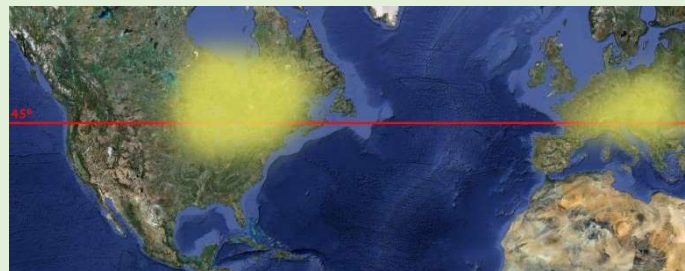
Ragweed has an enormous invasive potential through the production of large quantities of seeds with very high germination capacity. The weed damage in agriculture and potential effects on biodiversity add up to a huge negative impact.



### International Ragweed Society

The main topic of the IRS is to gather work from all over the world about phenology, pollen monitoring and management of ragweed in different areas.

IRS organizes a dedicated international congress in Europe every 4 or 5 years where the researchers can present the state of the art on ragweed related knowledge to propose targeted preventive measures.



### Membership



### INFORMATION DISSEMINATION – IRS WEBSITE



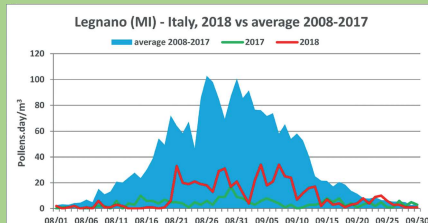
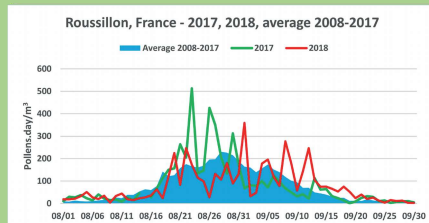
<http://internationalragweedsociety.org/>

### IRS committee

- President: M.Thibaudon
- Vice-President: U.Starfinger
- Secretary: S.Citterio
- Treasurers: R.Albertini, O.Pechamat
- Webmaster: G.Oliver
- Past president: M.Bonini
- Committee: S.Celenk, L.Makra

### Pollen data

Belgium, France, Germany, Hungary, Israel, Italy, Switzerland, Ukraine and Turkey have shared ragweed pollen data to follow the evolution of concentrations.



### Publications

A page is dedicated to publications concerning ragweed:

- *Ambrosia artemisiifolia* L. temperature responsive traits influencing the prevalence and severity of pollinosis: a study in controlled conditions (R.Gentili et al.)
- Estimating economic benefits of biological control of *Ambrosia artemisiifolia* by *Ophraella communa* in southeastern France (R.Mouttet et al.)
- etc...

### International Ragweed Day

The first Saturday of Summer has been proclaimed as the International Ragweed Day. The goal has been to increase awareness of the problem this invasive weed causes all over the world.

An example in France with two events organized in 2019 near Lyon to inform people about the "fight" against ragweed and the allergy risk related to its pollens.



### SMARTER

SMARTER was chosen to be one of the 10 success stories among all COST Actions that ended in 2016! Smarter website has been included to IRS website in 2017 to keep available all the information and documents. For the full Annual COST report of 2016 (including other success stories, figures on participation and finances), see <https://www.cost.eu/actions/FA1203/> #tabsName:overview



### AFFILIATIONS

- <sup>1</sup>IRS President, RNSA, Brussieu France
- <sup>2</sup>Department of Medicine and Surgery, University of Parma, Italy
- <sup>3</sup>Department of Hygiene and Health Prevention, Agenzia di Tutela della Salute della Città Metropolitana di Milano
- <sup>4</sup>Uludag University, Department of Biology, Aerobiology Laboratory, Bursa, Turkey
- <sup>5</sup>University of Milan – Bicocca, Department of Earth and Environmental Sciences, Milan, Italy
- <sup>6</sup>Institute of Economics and Rural Development, University of Szeged, Hódmezővásárhely, Hungary
- <sup>7</sup>RNSA, Brussieu, France
- <sup>8</sup>FREDON France, Paris, France
- <sup>9</sup>Julius Kuehn Institute, Braunschweig, Germany



Published by the RNSA