

Ragweed seed regulation by invertebrates in cultivated areas

A. Trichard, C. Auguste, Q. Martinez, S. Petit, B. Chauvel

2nd International Ragweed Conference

March 28-29, 2012, Lyon, France

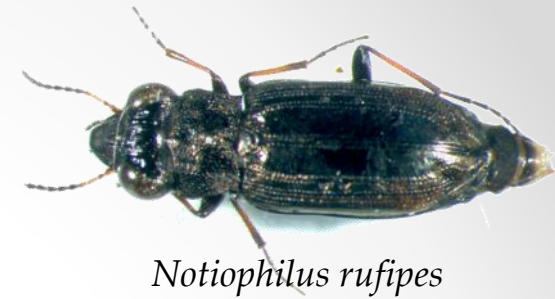


Question

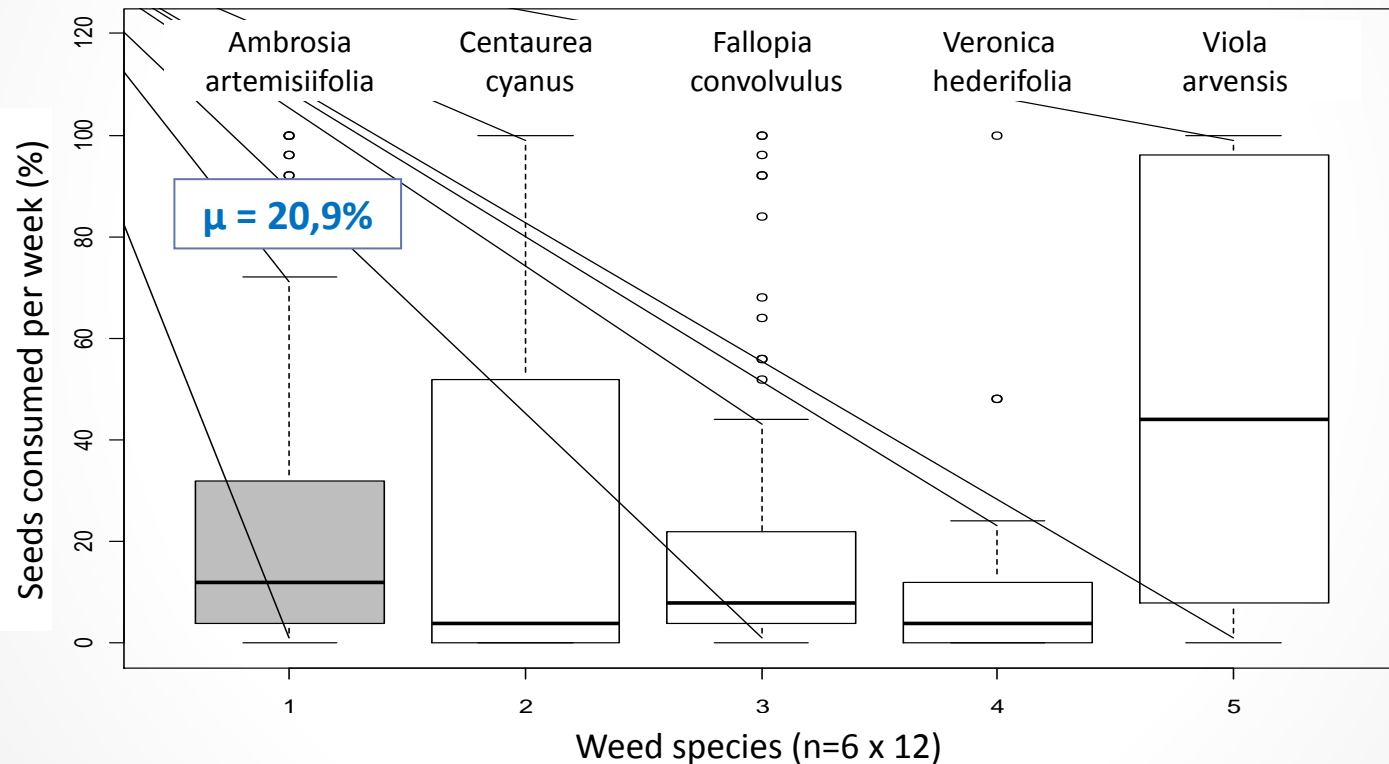
- Weed seeds regulation by invertebrates may be a lever of weed management
 - ➔ Does ragweed (alien species) suffer less pressure from seed regulation by invertebrates?
 - Do invertebrates consume ragweed seed?
 - Compared to other weeds, intensity of the regulation ?
- Ragweed-free area
 - Ragweed seeds are supposed to be completely new to invertebrates
- Use of seed cards with vertebrate exclosure cages for 32 weeds, including *A. artemissifolia*



Results



- On average, 20.7% of weed seeds were consumed



- A. artemisiifolia* seems to be intermediate among the 32-species gradient of weeds.

Conclusion

- Ragweed seeds are consumed by invertebrates
- Even if ragweed was a “new” seed, it presented an average feature in term of attractiveness for granivorous predators



Regulation but not control

Thank you for your attention